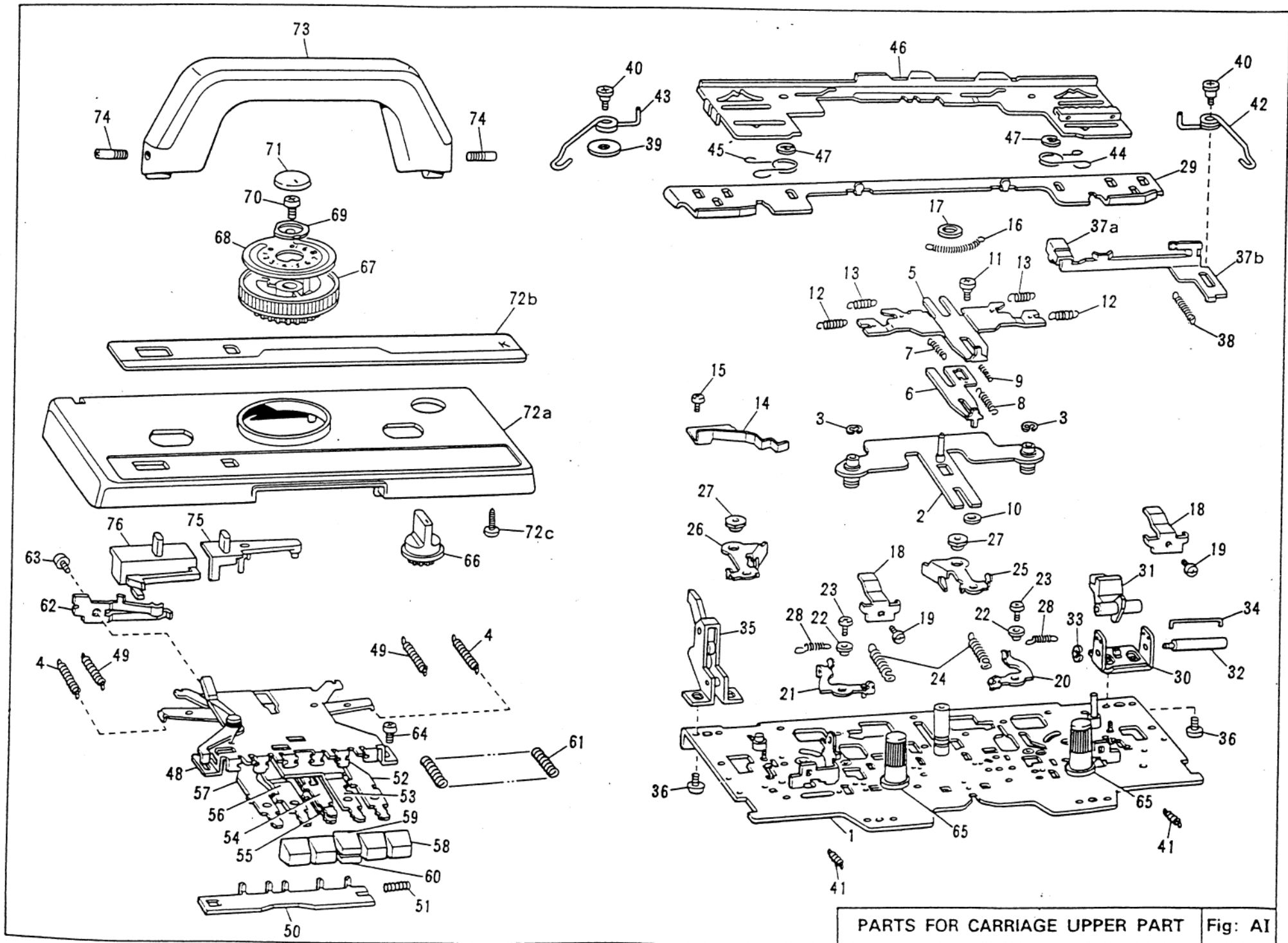


PARTS CATALOGUE FOR BROTHER KH-965 MACHINE

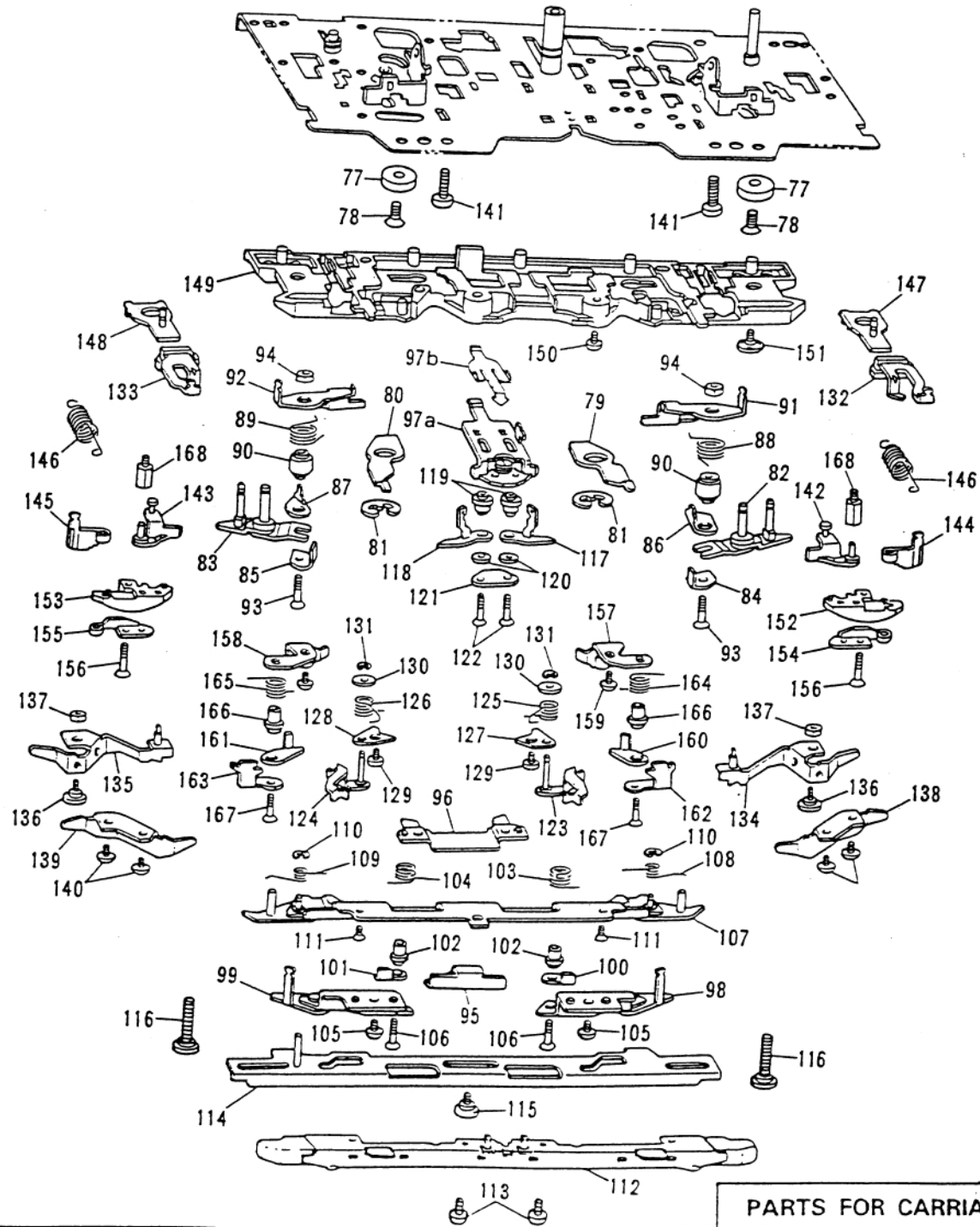
Parts marked with "O" are not interchangeable with other models



PARTS FOR CARRIAGE UPPER PART Fig: AI

PARTS FOR CARRIAGE UPPER PART

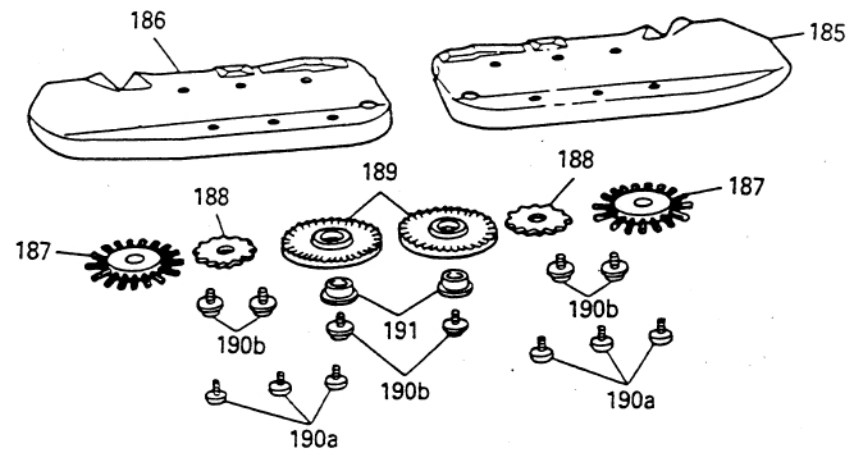
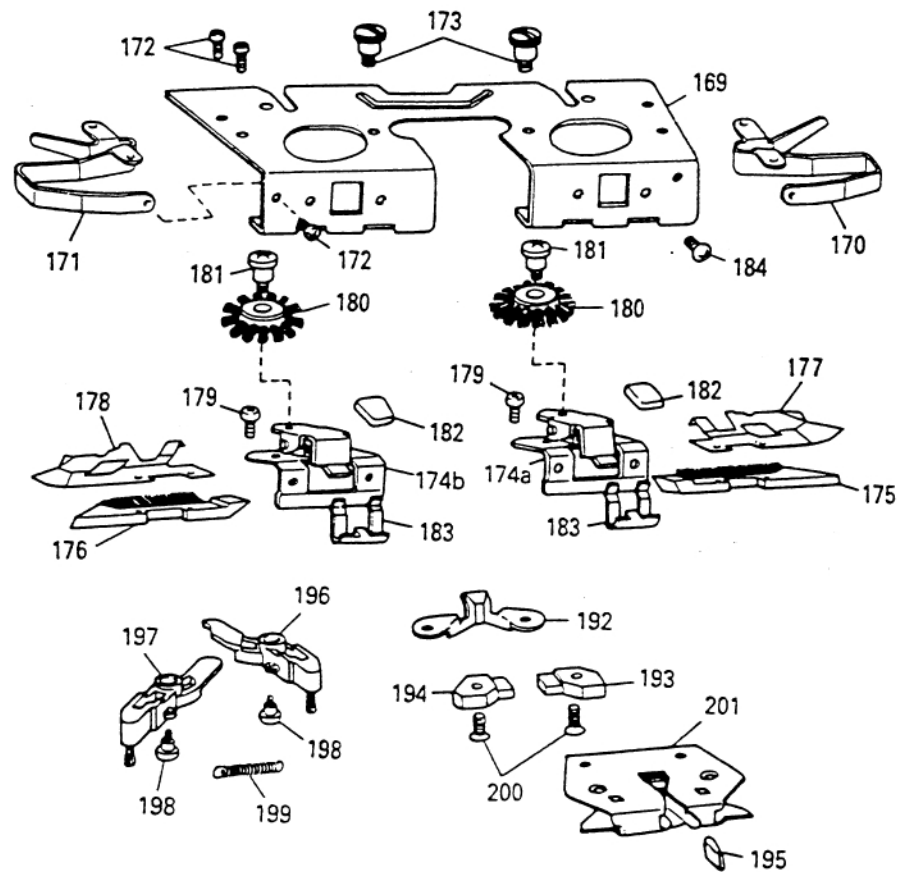
Ref. No.	Parts No.	Description	Revised	Q'ty	Ref. No.	Parts No.	Description	Revised	Q'ty
* A-I-1~76	418243001	K Carriage complete set for KH-965i		1	53	414119001	Part plate , L		1
A-II-77~201					54	413377001	MC plate		1
A-1	414011001	Carriage plate		1	55	413378001	L plate		1
2	414022001	Stitch cam guide plate		1	56	414116001	Tuck plate , R		1
3	048030346	Snap ring 3		2	57	414117001	Tuck plate , L		1
4	407432001	Raising cam change spring		2	58	405302007	Push button		4
5	414053000	Change plate A		1	59	414181001	Push button B		1
6	414054000	Change plate B		1	60	413379002	Push button a		1
7	414370001	Change plate A spring		1	61	403008001	Push button release spring		4
8	414252001	Change plate B spring		1	62	409595001	Stitch dial stopper spring		1
9	413452001	Change plate spring		1	63	060660506	Screw 3.18-40 X 5		1
10	414251001	Collar		1	64	060670406	Screw 3.57-40 X 4		2
11	414025001	Change plate guide collar		1	65	409596003	Thumb nut		2
12	414241001	MC cam change spring		2	* 66	409597009	Change knob		1
13	414178001	MC cam spring A		2	* 67~68	414175010	Stitch dial assembly		1
14	414065001	Front slide plate spring		1	67	409599003	Stitch dial		1
15	060660406	+Screw 3.18-40 X 4		1	* 68	413581012	Stitch dial indicator plate		1
16	414069001	Tuck cam spring		1	69	406283001	Stitch dial presser		1
17	414180001	Presser ring		1	70	060660606	Screw 3.18-40 X 6		1
18	414084001	Handle look spring		2	* 71	409601008	Stitch dial cap		1
19	062670406	Screw 3.57-40 X 4		2	* 72a~b	418245001	K carriage cover assembly for KH965i		1
20	414014001	Intarsia lever , R		1	* 72a	414110003	K carriage cover		1
21	414017001	Intarsia lever , L		1	* 72b	418246001	Carriage cover decoration plate for KH965i		1
22	414019001	Intarsia lever collar		2	72c	037351615	Screw 3.5 X 16		2
23	060660406	Screw 3.18-40 X 4		2	73	409605007	K carriage handle		1
24	414090001	Intarsia lever spring		2	74	409608001	Screw		2
25	414092001	Intarsia cam A , R		1	75	413437001	Plain lever knob		1
26	414093001	Intarsia cam A , L		1	76	414112001	H.C.L Knob		1
27	414094001	Nut		2					
28	414095001	Intarsia cam A spring		2					
29	409554001	Rear plate		1					
30~34	410130001	Row counter tripper		1					
35	410132101	Knit leader tripper		1					
36	060660406	+Screw 3.18 X 4		4					
37	410141003	K carriage sensor magnet assembly		1					
38	412131001	Shift spring for K carriage sensor		1					
39	025050332	Washer		1					
40	410146001	Shaft for K carriage sensor magnet		2					
41	410135001	End needle selection cam spring		2					
42	414189001	Needle selection change spring , R		1					
43	414190001	Needle selection change spring , L		1					
44	409543001	Connecting plate spring , R		1					
45	409544001	Connecting plate spring , L		1					
46	410138001	Upper slide plate		1					
47	048040346	Snap ring 4		2					
48~63	414113001	Cam button unit		1					
48	414114001	Cam button unit body		1					
49	407512001	Raising cam spring		2					
50	413545001	Stopper plate		1					
51	405524001	Stopper spring		1					
52	414118001	Part plate , R		1					



PARTS FOR CARRIAGE LOWER PART Fig: AII

PARTS FOR CARRIAGE LOWER PART

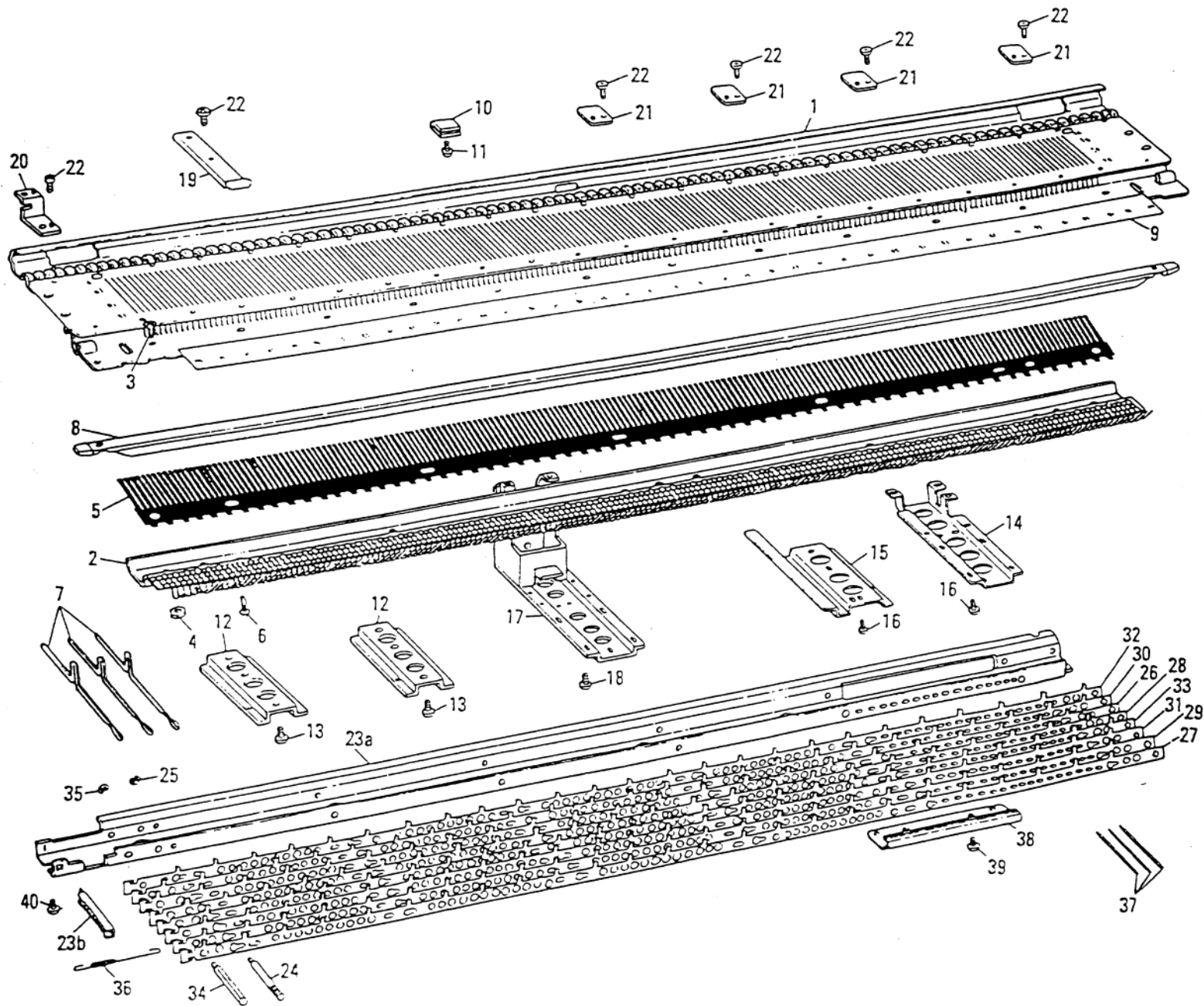
Ref. No.	Parts No.	Description	Revised	Q'ty	Ref. No.	Parts No.	Description	Revised	Q'ty
A-II-77	407285000	Carriage magnet 16 X 18		2	127	414077001	Cam plate		1
78	408773006	Flat head screw 3.18-40 X 9		2	128	414077001	Cam plate		1
79	414242001	Raising cam guide , R		1	129	414049001	Screw		2
80	414243001	Raising cam guide , L		1	130	025350233	Washer		2
81	048070346	Snap ring 7		2	131	048020346	Snap ring 2		2
82	414026001	Stitch cam assembly , R		1	132	409510101	Selection cam for right end needle		1
83	414030001	Stitch cam assembly , L		1	133	409513101	Selection cam for left end needle		1
84	407296001	Sub stitch cam , R		1	134	414078001	Separation cam , R		1
85	407297001	Sub stitch cam , L		1	135	414080001	Separation cam , L		1
86	410488001	Valve cam D , R		1	136	410115001	Screw 3.18		2
87	410489001	Valve cam D , L		1	137	021660306	Nut 3.18-40		2
88	410490001	Valve cam D spring , R		1	138	414082001	Guide cam F , R		1
89	410491001	Valve cam D spring , L		1	139	414083001	Guide cam F , L		1
90	414245001	Sub stitch cam shaft		2	140	413554001	Screw 3.18 X 3		4
91	414032001	MC cam , R		1	141	062681206	Screw 4.37-40 X 12		2
92	414033001	MC cam , L		1	142	414185001	Needle selection change cam , R		1
93	407312001	Screw		2	143	414187001	Needle selection change cam , L		1
94	021660306	Nut		2	144	414203001	Valve cam F , R		1
95	414034001	Slide cam		1	145	414204001	Valve cam F , L		1
96	414035001	Slide cam guide		1	146	410129001	Valve cam F spring		2
97a	414036001	Guide cam C		1	147	410123001	Connecting plate , R		1
97b	414462000	Guide cam C spring		1	148	410125001	Connecting plate , L		1
98	414041001	Guide cam B , R		1	149	414086001	Rear foot		1
99	414045001	Guide cam B , L		1	150	060660406	Screw 3.18-4 X 6		4
100	414176001	Valve cam B , R		1	151	409494001	Screw 3.57		2
101	414177001	Valve cam B , L		1	152	417167001	Selection cam , R		1
102	414050001	Valve cam B shaft		2	153	417168001	Selection cam , L		1
103	414051001	Valve cam B spring , R		1	154	409537001	Guide cam G , R		1
104	414052001	Valve cam B spring , L		1	155	409538001	Guide cam G , L		1
105	413554001	Screw 3.18 X 3		2	156	410030001	Screw 2.38 X 14		2
106	407299001	Screw		2	157	414100001	Sub selection cam , R		1
107	414056001	Guide cam A		1	158	414101001	Sub selection cam , L		1
108	414194001	Change cam spring , R		1	159	413554001	Screw 3.18 X 3		2
109	414195001	Change cam spring , L		1	160	414102001	Intarsia cam B , R		1
110	048025346	Snap ring 2.5		2	161	414103001	Intarsia cam B , L		1
111	413285001	Screw 3.18 X 4		2	162	414104001	Intarsia cam B plate , R		1
112	414172001	Front foot		1	163	414105001	Intarsia cam B plate , L		1
113	413554001	Screw 3.18 X 3		2	164	414106001	Intarsia cam B spring , R		1
114	414062001	Front slide plate		1	165	414107001	Intarsia cam B spring , L		1
115	414184001	Screw 3.18 X 4		1	166	414108001	Intarsia cam B shaft		2
116	408504001	Screw 3.18		2	167	407299001	Screw		2
117	414066001	Tuck cam , R		1	168	414091001	Selection change cam shaft		2
118	414067001	Tuck cam , L		1					
119	414068001	Tuck cam , shaft		2					
120	414179001	Washer		2					
121	407340001	Tuck cam plate		1					
122	407299001	Screw		2					
123	414070001	Valve cam G , R		1					
124	414073001	Valve cam G , L		1					
125	414075001	Valve cam G spring , R		1					
126	414076001	Valve cam G spring , L		1					



PARTS FOR CARRIAGE SINKER PLATE Fig: AII

PARTS FOR CARRIAGE SINKER PLATE

Ref. No.	Parts No.	Description	Revised	Q'ty	Ref. No.	Parts No.	Description	Revised	Q'ty
All-169~201	415551001	Sinker plate assembly		1					
169~191	415552001	Sinker plate arm assembly		1					
169	409979001	Sinker plate arm		1					
170	414122000	Weaving thread guide , R		1					
171	414123000	Weaving thread guide , L		1					
172	409162001	Tapping screw 2.6		6					
173	409626001	Thumb screw		2					
174a	410026001	Weaving lever assembly , R		1					
174b	410027001	Weaving lever assembly , L		1					
175	410003001	Latch opening brush , R		1					
176	410004001	Latch opening brush , L		1					
177	414191000	Latch presser plate , R		1					
178	414192000	Latch presser plate , L		1					
179	037280616	Screw 2.6 X 6		4					
180	414417001	Weaving pattern brush		2					
181	408316001	Screw 3.18		2					
182	409629003	Weaving lever knob		2					
183	407441001	Weaving lever spring		2					
184	408305001	Screw 3.18 X 5		4					
185	409614001	Sinker plate , R		1					
186	409618001	Sinker plate , L		1					
187	407702001	Wheel brush		2					
188	405184002	Plastic gear		2					
189	413403001	Rubber wheel		2					
190a	412049006	Screw		6					
190b	409621001	Screw 3.18 X 4		6					
191	410970001	Holder		2					
192	409625000	Magnet holder plate		1					
193	407454000	Magnet , R		1					
194	407578000	Magnet , L		1					
195	407450004	Yarn feeder knob		1					
196	414196001	Yarn presser brush , R		1					
197	414197001	Yarn presser brush , L		1					
198	414249001	Screw		2					
199	414250001	Spring		1					
200	413247001	Screw 2.38 X 10		2					
201	414130001	Yarn feeder body		1					

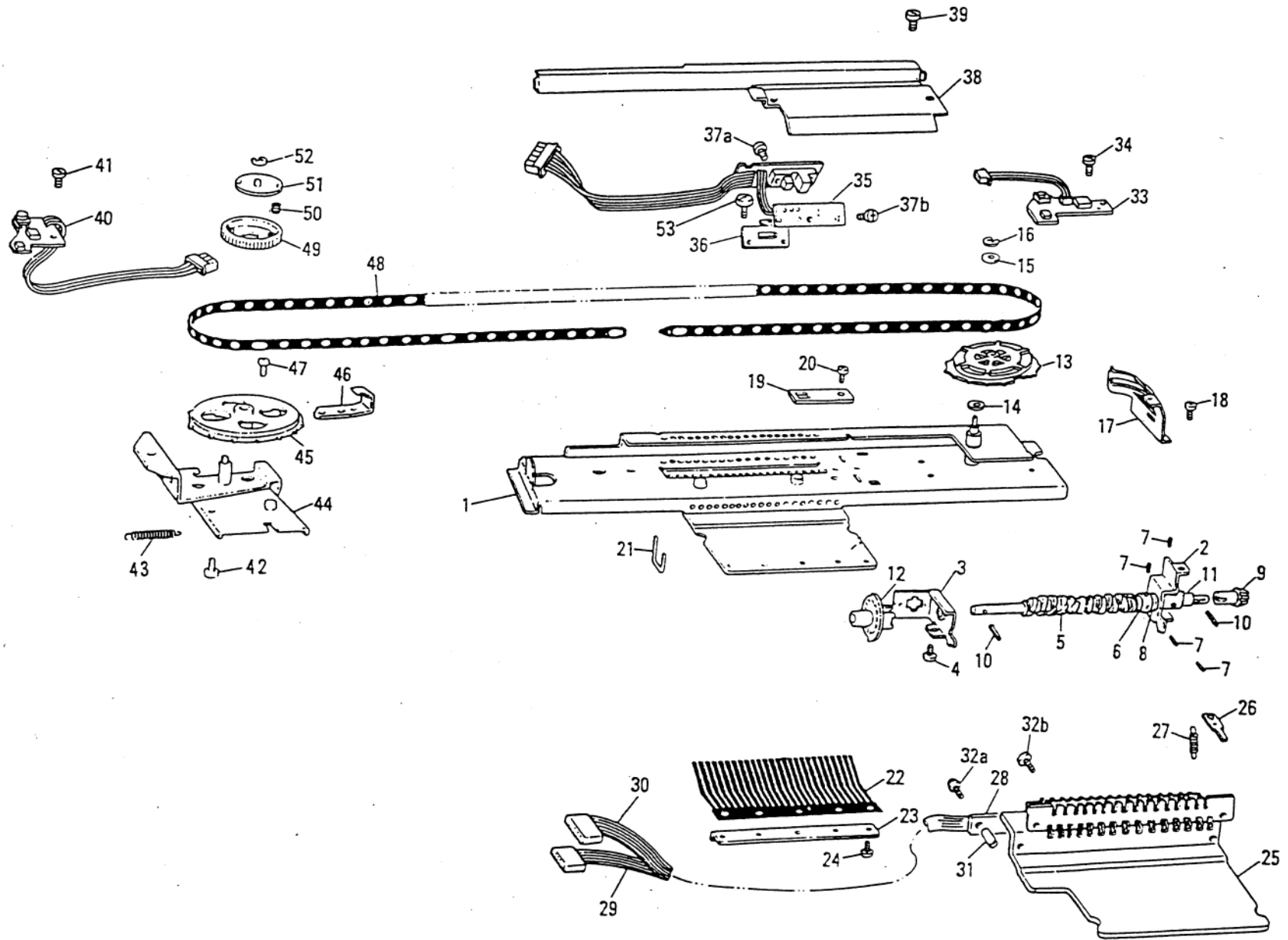


PARTS FOR NEEDLE BED

Fig: B

PARTS FOR NEEDLE BED

Ref. No.	Parts No.	Description	Revised	Q'ty	Ref. No.	Parts No.	Description	Revised	Q'ty
B-1	412803101	Needle bed assembly		1					
2	410154101	Needle bed comb assembly		1					
3	412109004	Screw 2.38-56 X 7		12					
4	405077001	Nut 2.38		12					
5	407112001	Needle retaining spring		1					
6	407687001	Screw 3.18		3					
7	407113001	Plain needle		200					
8	409643003	Needle presser bar assembly		1					
9	410157001	Needle position indicator		1					
10	409656000	Timing belt cover		1					
11	412048006	--Screw 3.18-40 X 3		1					
12	407120000	Lower holder plate		2					
13	409197001	Screw with washer		4					
14	410159000	Stay , R		1					
15	408061000	Stay center , A		1					
16	409197001	Screw with washer		6					
17	410161101	Stay center , B		1					
18	409197001	Screw with washer		4					
19	410170000	Carrying case reinforcing plate		1					
20	410175000	Position sensor board holder plate		1					
21	413952000	Pattern case holder plate		4					
22	417894001	Screw 3.18 X 3		6					
23~36	410188101	Needle selector plate holder assembly		1					
23a~b	487374101	Needle selector plate holder		1					
24	408159001	Shaft A		6					
25	048025346	Snap ring 2.5		6					
26	410191001	Needle selector plate , 1		1					
27	410192001	Needle selector plate , 2		1					
28	410193001	Needle selector plate , 3		1					
29	410194001	Needle selector plate , 4		1					
30	410195001	Needle selector plate , 5		1					
31	410196001	Needle selector plate , 6		1					
32	410197001	Needle selector plate , 7		1					
33	410198001	Needle selector plate , 8		1					
34	408172001	Shaft B		1					
35	048025346	Snap ring 2.5		1					
36	410476001	Needle selector plate spring		8					
37	408098001	N.S.P. operation lever		16					
38	410199001	Operation lever presser		1					
39	409197001	Screw with washer		2					
40	409197001	Screw with washer		7					

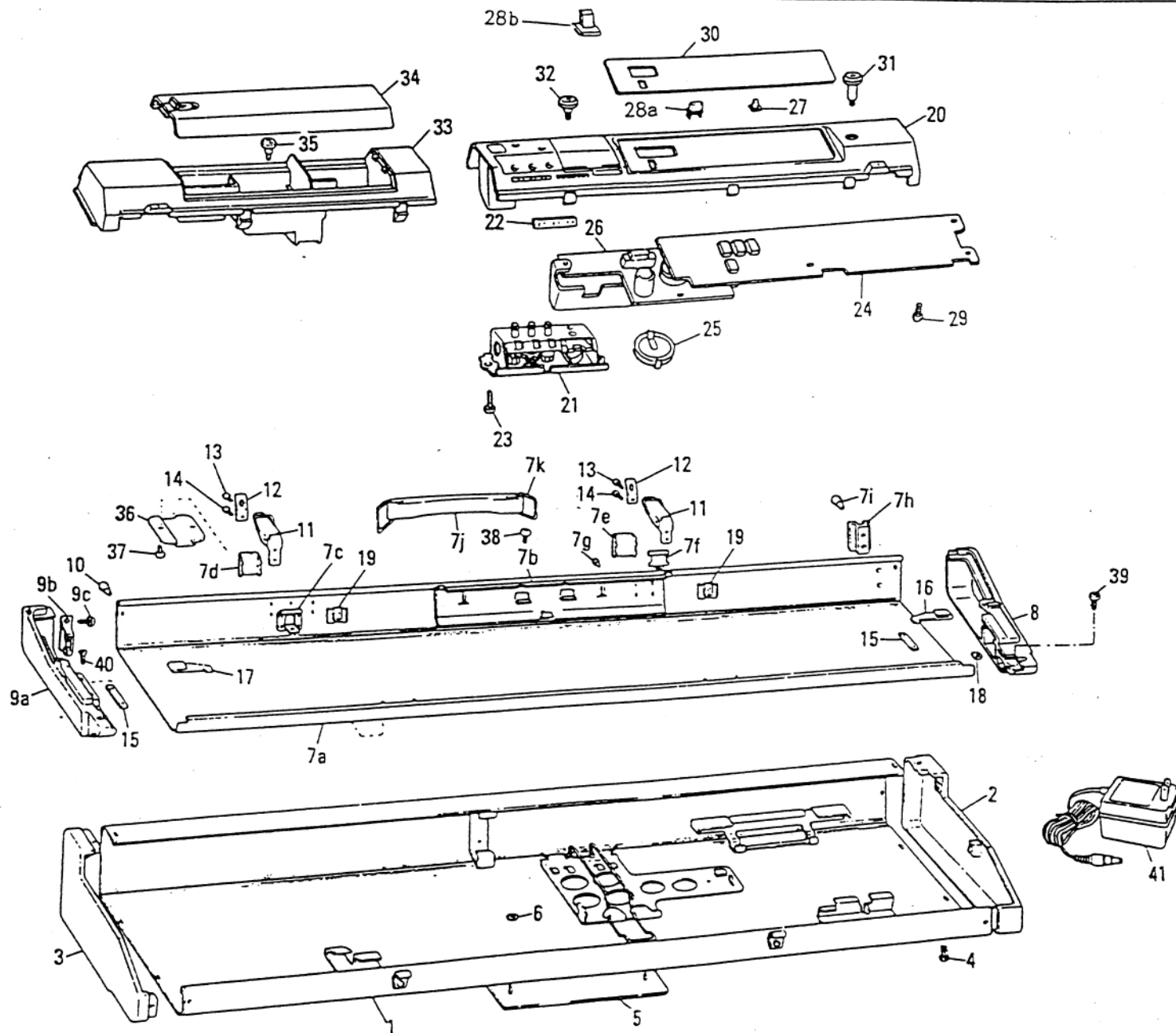


PARTS FOR NEEDLE SELECTOR UNIT

Fig: C

PARTS FOR NEEDLE SELECTOR UNIT

Ref. No.	Parts No.	Description	Revised Q'ty	Ref. No.	Parts No.	Description	Revised Q'ty
* C-1~32	418286001	Rotary cam holder body assembly	1	47	406397001	Screw with washer 3.18 X 5	2
1	417281001	Rotary cam holder body	1	48	410186001	Timing belt	1
2	417283001	Rotary cam holder , R	1	49	410477001	Friction plate	1
3	417285001	Rotary cam holder , L	1	50	410479001	Friction plate spring	4
4	409197001	Screw with washer	7	51	410478000	Presser for friction plate spring	1
5	413907001	Rotary cam	1	52	048030346	Snap ring 3	1
6	417808051	Rotary cam adjuster collar	1	53	060660406	+Screw 3.18-40 X 4	1
7	014400435	Stopper screw	4				
8	411013001	Washer	1				
9	410216000	Bevel gear Z12	1				
10	047201042	Spring pin AW2	2				
* 11	418289001	Adjuster collar for bevel gear Z12	1				
12	413910001	Slit disc	1				
13	416602001	Belt pulley , R	1				
14	410223001	Washer 6.3	1				
15	400806004	Washer 3.6	1				
16	048025346	Snap ring 2.5	1				
17	416604100	Position sensor board holder plate , R	1				
18	409197001	Screw with washer	2				
19	408068001	Card reader guide stopper	1				
20	060660406	+Screw 3.18-40 X 4	1				
21	417287001	Rotary cam lever	16				
22	410226001	Rotary cam lever spring	1				
23	410227000	Cam lever spring presser plate	1				
24	060660406	Screw 3.18-40 X 4	5				
* 25~32	418315001	Needle selector solenoid assembly	1				
25	417289001	Solenoid yoke 4.5	1				
26	417291001	Armature	16				
* 27	418308001	Spring for armature	16				
28	410327101	Solenoid board	1				
29	414006001	Solenoid cord 1	1				
30	414007001	Solenoid cord 2	1				
31	408481002	Spacer 4 X 7	2				
32a	415616001	Screw with washer 3 X 14	2				
32b	060670506	+Screw 3.57-40 X 5	2				
33	417033001	Right position sensor P.C.B. assembly	1				
34	060660406	+Screw 3.18-40 X 4	1				
35	417031001	Encoder sensor assembly	1				
36	417498000	Encoder board holder plate	1				
37a	062660806	Screw 3.18-40 X 8	2				
37b	062660506	Screw 3.18-40 X 5	2				
38	417292000	Cord cover	1				
39	060660406	+Screw 3.18-40 X 4	2				
40	417035001	Left position sensor board assembly	1				
41	060660406	+Screw 3.18-40 X 4	1				
42	409197001	Screw with washer	2				
43~47, 49~52	410181002	Pulley assembly	1				
43	410016001	Belt tension control spring	1				
44	410180001	Pulley holder plate	1				
45	410182002	Pulley	1				
46	412034000	Pulley adjusting plate	1				

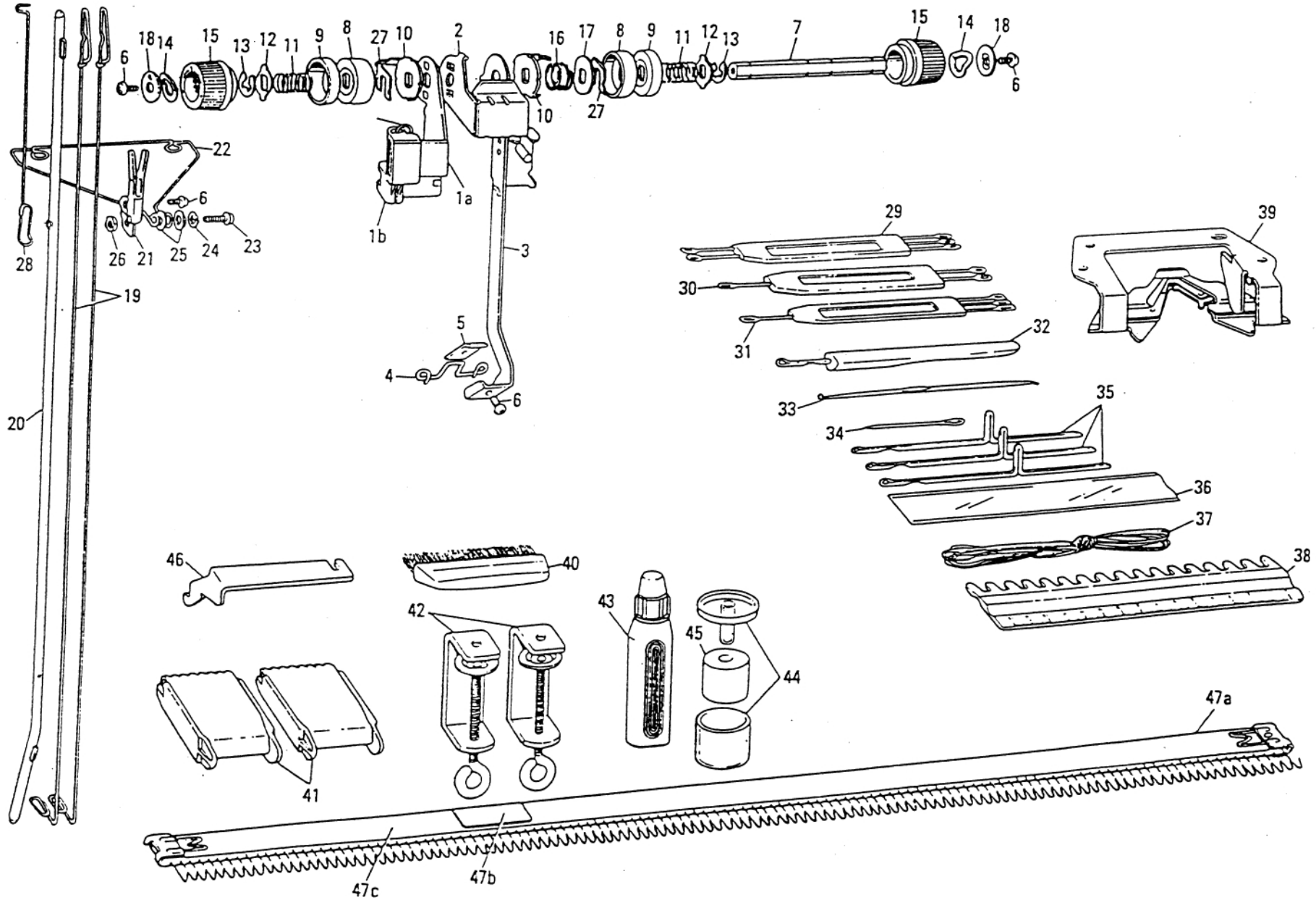


PARTS FOR CARRYING CASE

Fig: D

PARTS FOR CARRYING CASE

Ref. No.	Parts No.	Description	Revised	Q'ty	Ref. No.	Parts No.	Description	Revised	Q'ty
* D-1~19	418249001	Carrying case complete KH-965i		1	40	407119001	Screw 4.37		4
* 1~6	418250001	Carrying case upper assembly KH-965i		1	41	415665001	AC Adapter for knitting machine (240V, England)		1
1	417307001	Carrying case upper Body		1	41	415655001	AC Adapter for knitting machine (120V, UL)		1
2	409692003	Upper side plate , R		1	41	415664001	AC Adapter for knitting machine (220V, Europe)		1
3	409693003	Upper side plate , L		1	41	415916001	AC Adapter for knitting machine (230V, NZ)		1
4	408194003	Plastic rivet		10	41	416225001	AC Adapter for knitting machine (220V, France)		1
* 5	418251001	Brother name plate 965i		1	41	415663001	AC Adapter for knitting machine (120V, CSA)		1
6	408784001	Pushing nut		2					
7~19	417306101	Carrying case lower assembly		1					
7a~7k	417308101	Carrying case lower body		1					
8	409698003	Lower side plate , R		1					
9a	409699003	Lower side plate , L		1					
9b	414005001	Yarn tention support base		1					
9c	037281216	Tapping screw 2.6 X 12		4					
10	408194003	Plastic rivet		6					
11	404022002	Carrying case lock assembly		2					
12	404027001	Carrying case lock spring		2					
13	405658001	Screw 3.18		2					
14	405658001	Screw 3.18		2					
15	407265001	Needle bed fastening plate		2					
16	409640001	Extension rail lock spring , R		1					
17	409639001	Extension rail lock spring , L		1					
18	409700001	Square nut 2		2					
19	407115000	Fastening plate		2					
* 20~30	487838001	Pattern case whole assembly		1					
* 20~23	418268001	Pattern case assembly		1					
* 20	418269001	Pattern case		1					
21	410531003	Row counter assembly		1					
22	409721003	Row counter panel		1					
23	037351016	Screw 3.5 X 10		2					
* 24	418309001	P.C. Board assembly		1					
25	417524001	Battery		1					
* 26	418145001	Control board assembly		1					
27	416623003	Round key (White)		14					
27	416623004	Round key (Green)		1					
27	416623005	Round key (Yellow)		1					
28a	417333002	Ellipse key (White)		25					
28a	417333001	Ellipse key (Gray)		2					
28b	417715001	Switch cap		1					
29	037280816	Screw 2.6 X 8		12					
* 30	418255001	Pattern case decoration plate		1					
31	413946001	Stud screw 3.18		1					
32	410535001	Stud screw 3.18		1					
33~34	413947101	Accessory box assembly		1					
33	413948101	Accessory box		1					
34	413949001	Lid for box		1					
35	410535001	Stud screw 3.18		1					
36	407261001	Table clamp setting plate		2					
37	060660704	+-Screw 3.18-40 X 7		4					
38	060660406	+-Screw 3.18-40 X 4		3					
39	060660704	+-Screw 3.18-40 X 7		2					

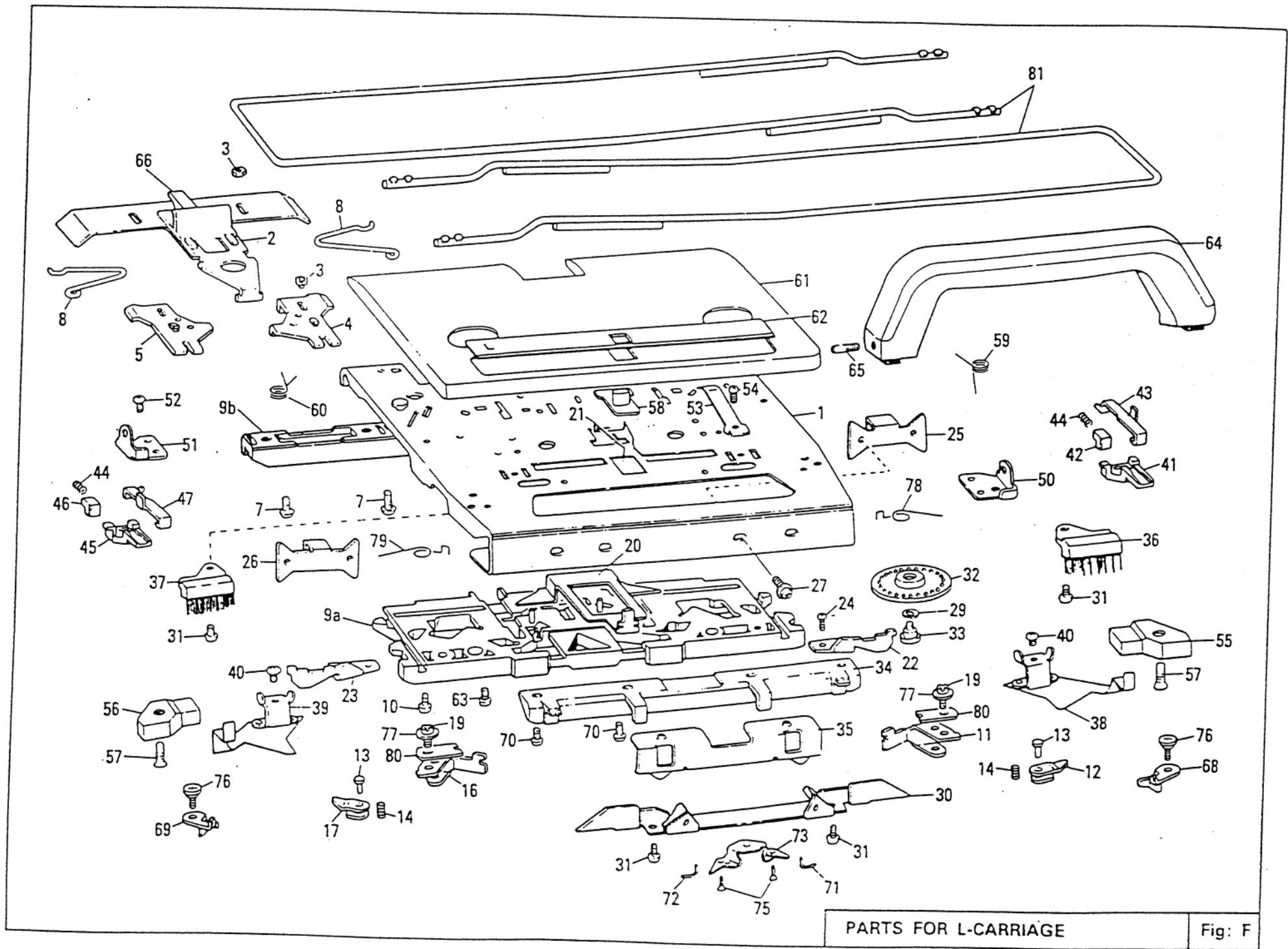


PARTS FOR ACCESSORIES

Fig: E

PARTS FOR ACCESSORIES

Ref. No.	Parts No.	Description	Revised	Q'ty	Ref. No.	Parts No.	Description	Revised	Q'ty
E-1~28	412183002	Yarn tension unit assembly		1					
19	404755001	Take-up spring		2					
28	408614001	Sub take-up spring		1					
29	402631005	2 X 3 Transfer tool		1					
30	402576005	1 X 2 Transfer tool		1					
31	402575005	1 X 3 Transfer tool		1					
32	407458004	Latch tool		1					
33	414979001	Crochet		1					
34	402714001	Tapestry needle		1					
35	407113001	Plain needle		3					
36	407483000	Spare needle case		1					
37	402389001	Cast-on thread		1					
38	407482004	1/1 Needle pusher		1					
39	410971001	Plating yarn feeder assembly		1					
40	403552004	Hand brush		1					
41	404883006	Claw weight		2					
42	409198001	Table clamp		2					
43	405135004	Knitting machine oil		1					
44~45	487221001	Yarn wax with case		1					
46	407481001	Carriage lock		1					
47a~c	412878001	Cast-on comb assembly		1					
47a	412879001	Cast-on comb long		1					
47b	411365000	Connecting plate		1					
47c	412881001	Cast-on comb short		1					



PARTS FOR L-CARRIAGE Fig: F

PARTS FOR L CARRIAGE

Ref. No.	Parts No.	Description	Revised	Q'ty	Ref. No.	Parts No.	Description	Revised	Q'ty
* F-1~80	417876003	L carriage assembly KH-965i		1	56	407578000	Magnet , L		1
1	410481001	L carriage plate		1	57	417596001	Screw 3.18-40 X 10		2
2	410483001	Release button plate		1	58	409744005	Lace selecting knob		1
3	408166001	Stud for release button plate		4	59	412148001	L valve cam C spring , R		1
4	410484001	Connecting plate R for L carriage		1	60	412147001	L valve cam C spring , L		1
5	410485001	Connecting plate L for L carriage		1	* 61~62	417877003	L carriage cover for KH-965i		1
7	060660706	Screw 3.18-40 X 7		4	* 62	417878003	L carriage cover decoration plate KH-965i		1
8	410486001	Connecting plate spring		2	63	060660406	Screw 3.18-40 X 4		2
9a	415702001	Main cam		1	64	409748007	L carriage handle		1
9b	415704000	Rear foot		1	65	409751001	Screw		2
10	060660806	Screw 3.18-40 X 8		2	66	410585005	Release button		1
11	410578001	Separation cam R for L carriage		1	68	412145001	L valve cam C , R		1
12	408132001	Raising cam right for L carriage		1	69	412146001	L valve cam C , L		1
13	410579001	Shaft for separation cam		2	70	060660806	Screw 3.18-40 X 8		4
14	408134001	Raising cam spring		2	71	412141001	L valve cam B , R		1
16	410581001	Separation cam L for L carriage		1	72	412142001	L valve cam B , L		1
17	408137001	Raising cam left for L carriage		1	73	412143001	Reinforcing plate B		1
19	060660706	Screw 3.18-40 X 7		2	75	040210812	Screw 2 X 8		2
20	408582001	Lace selecting cam		1	76	409528001	Lever shaft		2
21	408583001	Change lever spring		1	77	403069001	Washer 3.3		2
22	410583001	Right end needle separation cam for L		1	78	410966001	R end needle selection change spring		1
23	410584001	Left end needle separation cam for L		1	79	410967001	L end needle selection change spring		1
24	410592001	+ -Screw 3.18 X 11.6		2	80	412898000	Separation cam plate		2
25	410494001	Needle transfer plate R		1	81	412205002	Extension rail		2
26	410495001	Needle transfer plate L		1					
27	413734001	Screw 3.18-40 X 4		4					
29	028030243	Spring washer		2					
30	408573001	Cam plate		1					
31	060660406	Screw 3.18-40 X 4		4					
32	411003001	Rubber wheel		2					
33	405029001	Stud screw		2					
34	407490000	Front foot		1					
35	408579000	Front foot holder		1					
36	408580004	Small brush , R		1					
37	408581004	Small brush , L		1					
38	408561001	Spring plate , R		1					
39	408562001	Spring plate , L		1					
40	060660406	Screw 3.18-40 X 4		2					
41	410957002	R end needle selection cam for L		1					
42	410959001	R end needle selection change cam for L		1					
43	410958001	R end needle selection plate for L		1					
44	410963001	R end needle selection cam spring for L		2					
45	410960002	L end needle selection cam for L		1					
46	410962001	L end needle selection change cam for L		1					
47	410961001	L end needle selection plate for L		1					
50	409740001	Handle setting base , R		1					
51	409739001	Handle setting base , L		1					
52	060670506	Screw 3.57-40 X 5		2					
53	407522001	Handle lock spring		2					
54	060660406	Screw 3.18-40 X 4		2					
55	407454000	Magnet , R		1					

※ When exchange the Main cam (Ref.No.F-9a) into new one , please refer to how to adjust the Mounting dimension of the Main cam on P.17 .